



## Commercial Interiors

### Creating high performing spaces

With a majority of our lives spent indoors, it's important to understand the connection between the indoor environment and our health and well-being. Owners and partners are prioritizing the health and sustainability of their buildings and seeking ways to make a lasting impact.

Whether building out a new space, updating the lobby and public spaces, incorporating biophilic design or advising on the newest features and healthy material options, our goal is to deliver a space that enables your team to perform at its best.



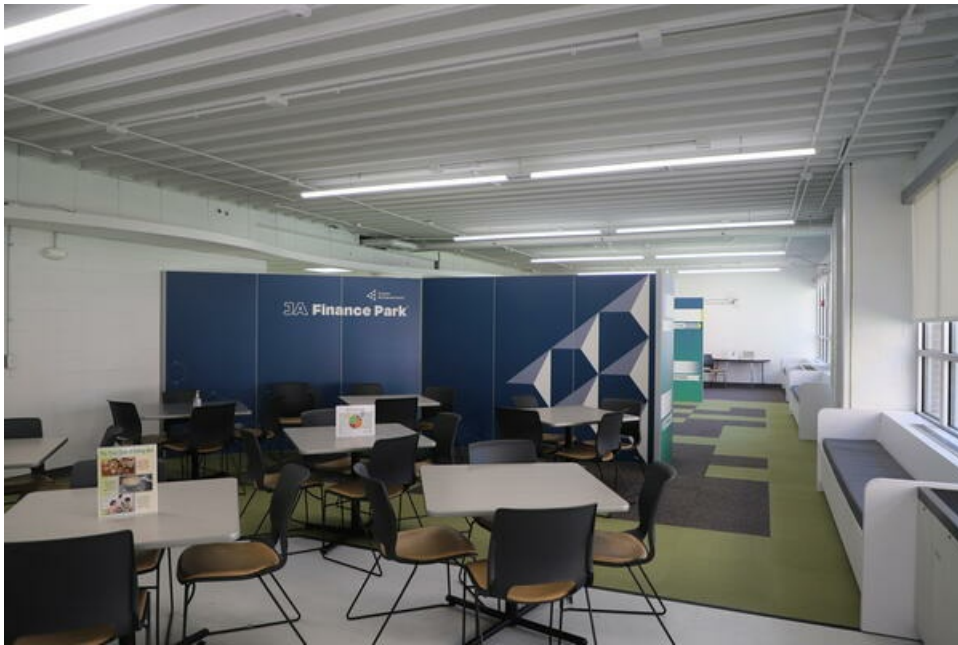
### [Confidential Education Facility](#)



[Pepper Construction Cincinnati Office](#)



[Indiana State Archives Building](#)



[Junior Achievement Finance Park](#)



[Andelyn Biosciences Office Buildout](#)

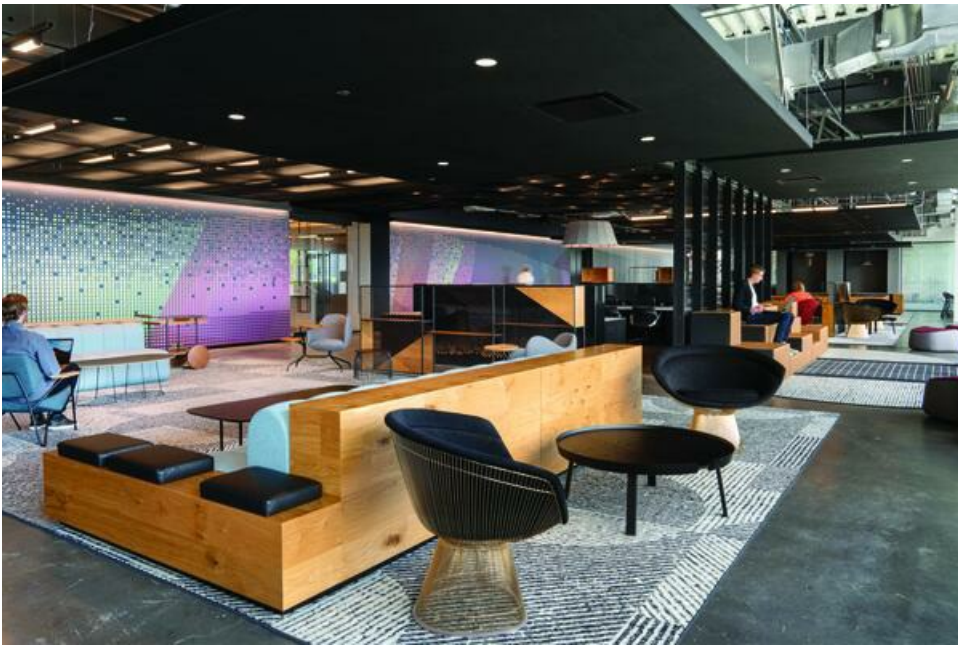




**[Blazer Tech II Office](#)**



**[Confidential Downtown Cincinnati Office Renovation](#)**



[WPP Chicago Relocation](#)



[BMO Tower - Milwaukee](#)

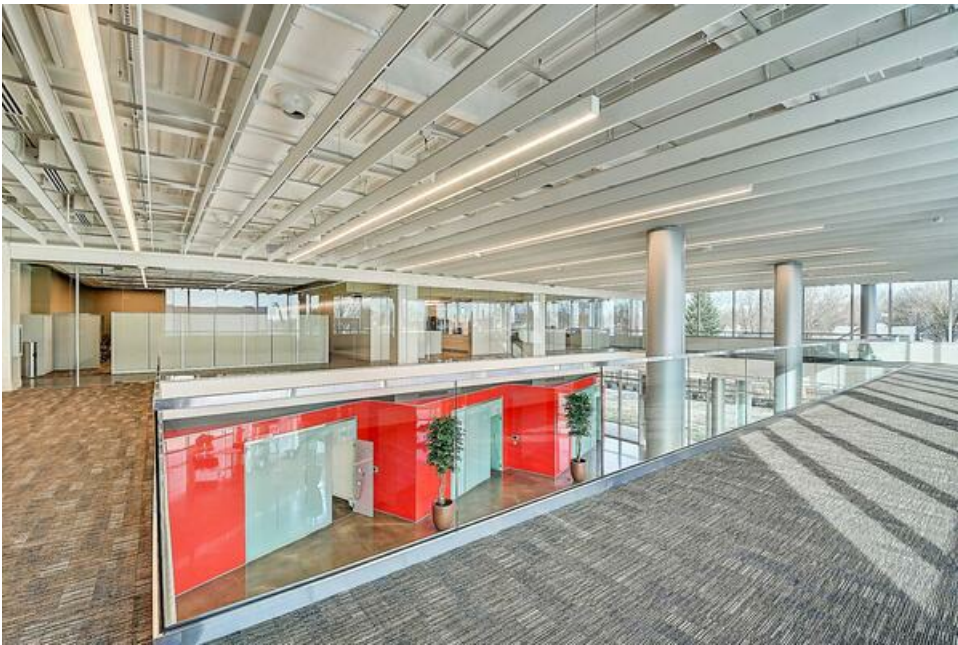




[Fifth Third Jungle Jim's Fit-out](#)



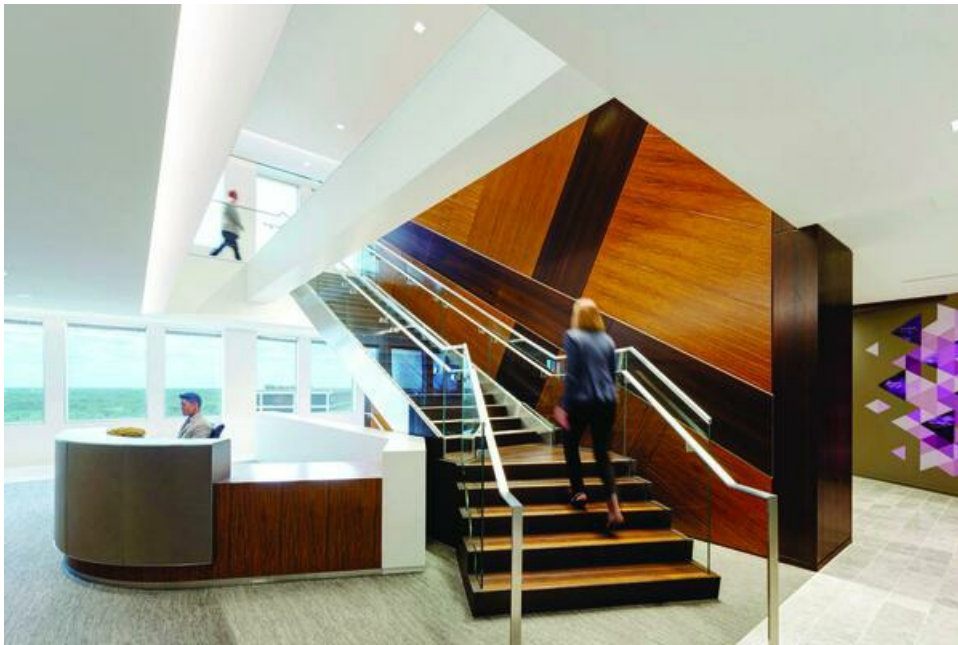
[BARK Columbus Office Fit-Out](#)



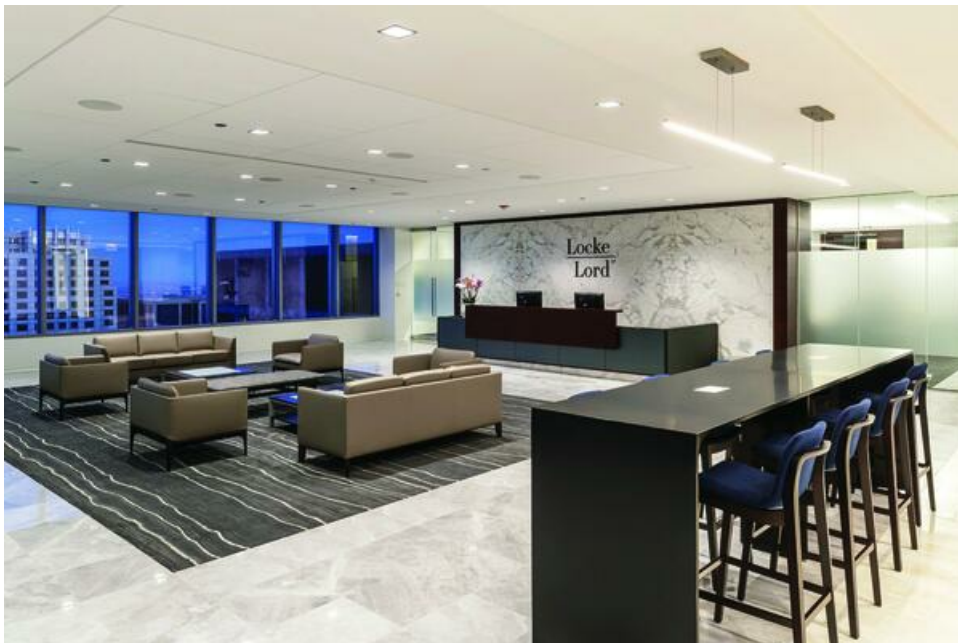
**Allison Transmission Innovation Center**



**Radiology Partners Encova Insurance Building Renovation**



[First Midwest Bank Headquarters](#)



[Locke Lord, LLP](#)





[Heartland Advisors](#)



[Erie Street](#)



[Cboe Global Markets, Inc.](#)